

## Silicon Bilateral Voltage Triggered Switch

### General Description

The sidac is a silicon bilateral voltage triggered switch with greater power-handling capabilities than standard diacs. Upon application of a voltage exceeding the sidac breakover voltage point, the sidac switches on through a negative resistance region to a low on-state voltage. Conduction continues until the current is interrupted or drops below the minimum holding current of the device.

Sinble's offers a voltage range of 79V to 600V in DO-15, TO-92 or SMB package.

Sinble's sidacs feature glass passivated junctions to ensure a rugged and dependable device capable of withstanding harsh environments.

Variations of devices covered in this data sheet are available for custom design applications. Consult the factory for more information.

### Applications

- ◆ High voltage lamp ignitors
- ◆ Natural gas ignitors
- ◆ Natural gas ignitors
- ◆ Gas oil ignitors
- ◆ High voltage power supplies
- ◆ Xenon ignitors
- ◆ Over voltage protector
- ◆ Fluorescent lighting ignitors
- ◆ HID surge current capability

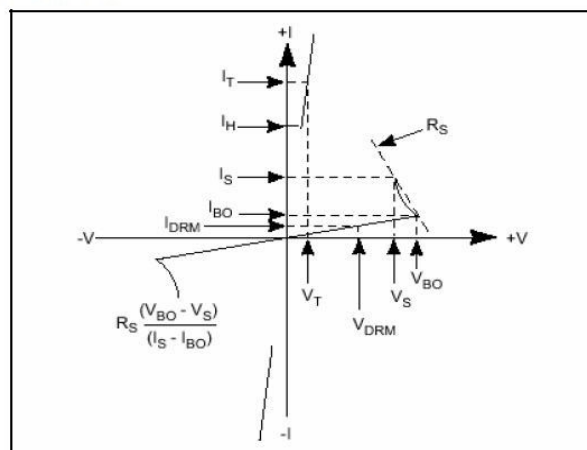
### Features

- AC circuit oriented
- Glass-passivated junctions
- High surge current capability

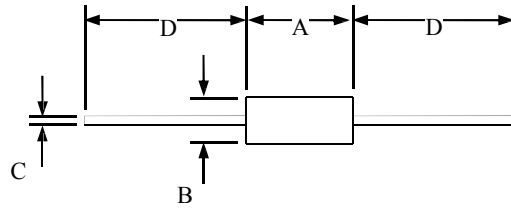
**Electrcal Characteristics (Tamb=25°C)**

Part Number	VBO		VDRM	IDRM	VTM	IT	IH
	Breakover Voltage(Instantaneous clamping voltage)		Blocking Voltage	Peak Off-state Current at VDRM	Peak On-state Voltage IT=1A	Continuous On-state DC or RMS Current	Holding Current
	Min.(V)	MAX.(V)	MIN.(V)	MAX.(uA)	MAX.(V)	MAX.(A)	MAX.(mA)
K0900	80	100	65	10	1.5	1.0	100
K1050	95	115	75	10	1.5	1.0	100
K1100	105	120	85	10	1.5	1.0	100
K1200	110	125	90	10	1.5	1.0	100
K1300	120	140	95	10	1.5	1.0	100
K1400	130	145	105	10	1.5	1.0	100
K1500	140	170	115	10	1.5	1.0	100
K2000	190	215	150	10	1.5	1.0	100
K2200	205	230	165	10	1.5	1.0	100
K2400	220	250	175	10	1.5	1.0	100
K2500	240	280	190	10	1.5	1.0	100
K3000	270	330	215	10	1.5	1.0	100
K3500	320	390	260	10	1.5	1.0	100
K4000	375	460	310	10	1.5	1.0	100
K4500	440	530	360	10	1.5	1.0	100
K5000	505	600	420	10	1.5	1.0	100

■ V-I Characteristics




### Product Dimensions



DO-15

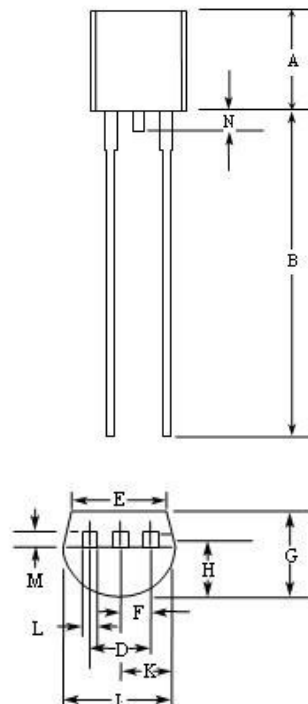
Dimension	Inches		Millimeters		NOTE
	MIN	MAX	MIN	MAX	
A	0.230	0.300	5.80	7.60	
B	0.104	0.140	2.60	3.60	Φ
C	0.026	0.034	0.70	0.90	Φ
D	1.000		25.40		

### Summary of Packing Options


Package Type	Description	Packing Quantity	Industry Standard
 DO-15	Tape and Reel Pack	DO-15	N/A
		4000PCS	

### Product Dimensions

Dimension	Inches		Millimeters	
	MIN	MAX	MIN	MAX
A	0.176	0.196	4.47	4.98
B	0.5		12.7	
D	0.095	0.105	2.41	2.67
E	0.15		3.81	
F	0.046	0.054	1.16	1.37
G	0.135	0.145	3.43	3.68
H	0.088	0.096	2.23	2.44
J	0.176	0.186	4.47	4.73
K	0.088	0.096	2.23	2.44
L	0.013	0.019	0.33	0.48
M	0.013	0.017	0.33	0.43
N		0.06		1.52

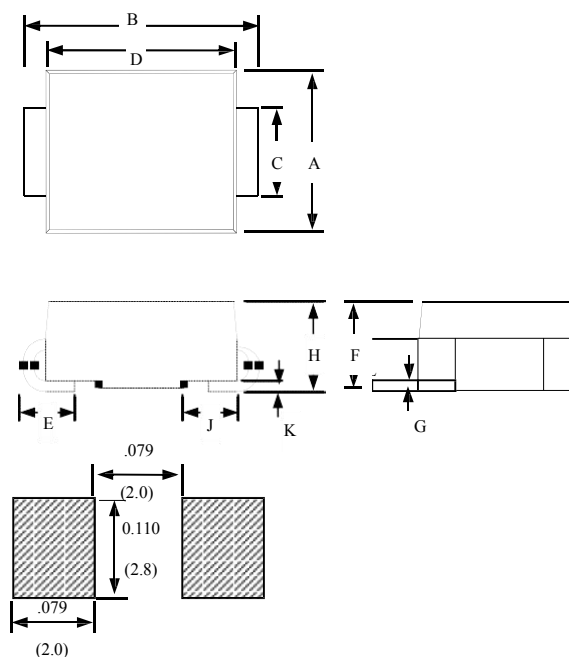


### Summary of Packing Options


Package Type	Description	Packing Quantity	Industry Standard
TO-92 	Buck Pack	2000 PCS	N/A

### Product Dimensions

Dimension	Inches		Millimeters	
	MIN	MAX	MIN	MAX
A	0.134	0.155	3.40	3.94
B	0.205	0.22	5.21	5.59
C	0.075	0.083	1.90	2.11
D	0.166	0.185	4.22	4.70
E	0.036	0.056	0.91	1.42
F	0.073	0.087	1.85	2.2
G	0.002	0.008	0.05	0.20
H	0.077	0.094	1.95	2.40
J	0.043	0.053	1.09	1.35
K	0.008	0.014	0.20	0.35
L	0.039	0.049	0.99	1.24



### Summary of Packing Options

Package Type	Description	Packing Quantity	Industry Standard
DO-214AA(SMB) 	Embossed Carrier Reel Pack	3000PCS	EIA-481-D